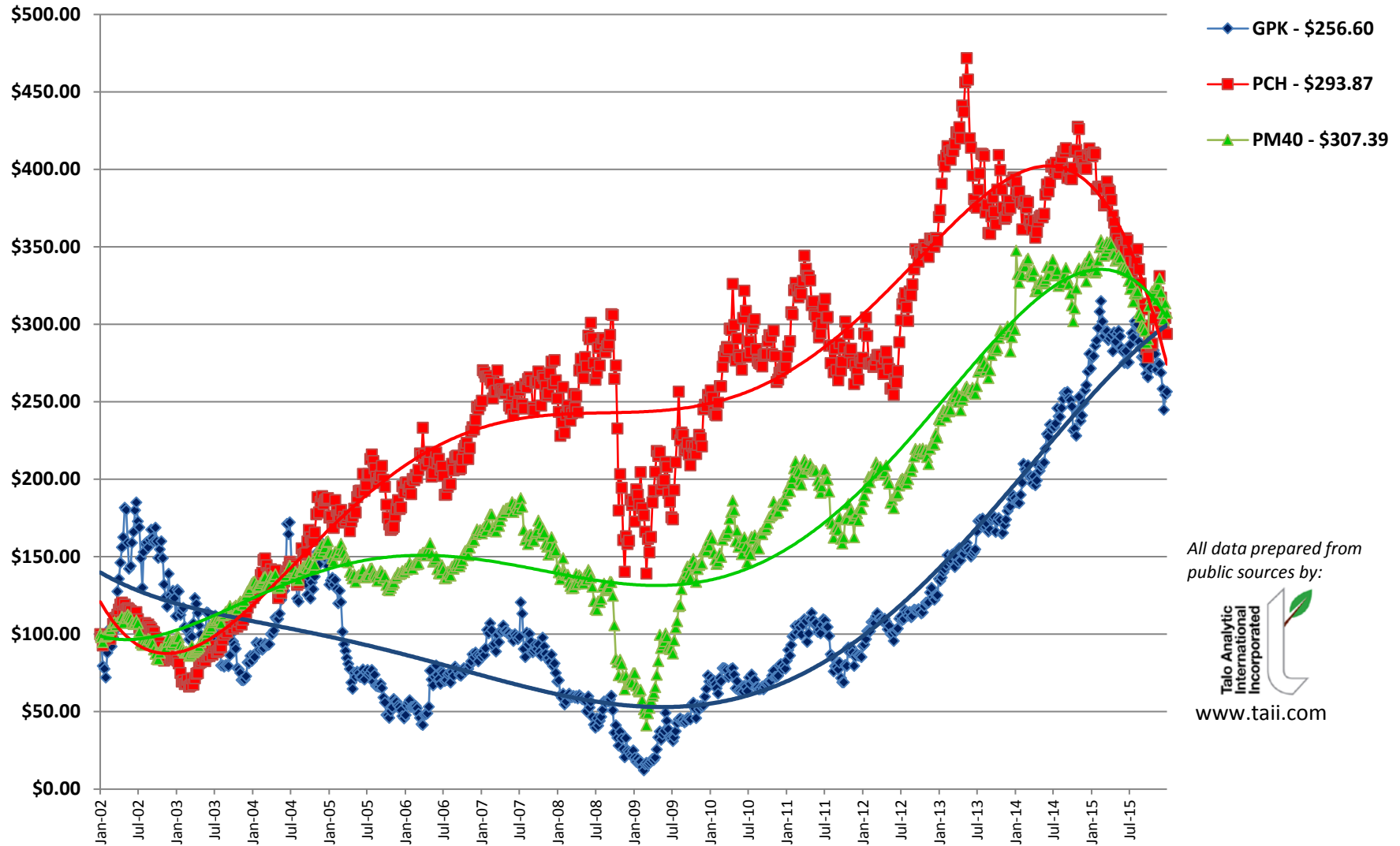




Disconnected Comparisons 5 Jan 2016

Graphic Packaging (GPK) and Potlatch (PCH)



All data prepared from public sources by:





About the PM40

PaperMoney has developed this forest industry/pulp and paper stock index for use in gauging the relative health of the overall industry. The index, PM40, contains 40 companies engaged primarily in forestry, pulp and paper manufacturing, converting, and printing. Our criterion for selection is as follows:

- Geographic Limitations--none
- Stock Exchange Listing--must be listed on a US exchange (to eliminate the effects of currency fluctuations). American Depositary Receipts (ADRs) are eligible for inclusion.
- Must be primarily dependent on cellulose in any form for business health. In other words, Kimberly-Clark is included, but Procter & Gamble is not. McGraw Hill is included, but the New York Times is not.
- The PM40 is an equivalent-weight Index, rebalanced quarterly.

The companies comprising the index are:

1. 3M Co. (MMM)	11. Graphic Packaging Holding Co. (GPK)	21. Orchids Paper Products Inc. (TIS)	31. SAPPI Ltd. (SPPJY)
2. Amcor Ltd. (AMCRY)	12. Greif Inc. (GEF)	22. Orient Paper Inc. (ONP)	32. Schweitzer-Mauduit Int'l Inc. (SWM)
3. Bemis Co. (BMS)	13. Hadera Paper Ltd. (HAIPF)	23. Packaging Corp of America (PKG)	33. Sonoco Products Co. (SON)
4. Brookfield Infrastructure Partners (BIP)	14. International Paper Co. (IP)	24. Plum Creek Timber (PCL)	34. Stora Enso Oyj (SEOAY)
5. Cenvo Inc. (CVO)	15. KapStone Paper & Packaging Corp. (KS)	25. Pottlatch Corp. (PCH)	35. Universal Forest Products Inc. (UFPI)
6. Clearwater Paper Corp. (CLW)	16. Kimberly-Clark Corp. (KMB)	26. Rayonier Advanced Materials (RYAM)	36. UPM-Kymmene Oyj (UPMKY)
7. Deltic Timber Corp. (DEL)	17. Louisiana-Pacific Corp. (LPX)	27. Rayonier Inc. (RYN)	37. USG Corp. (USG)
8. Domtar Corp. (UFS)	18. McGraw Hill Financial Inc. (MHFI)	28. RELX Group (RELX)	38. Wausau Paper Corp. (WPP)
9. Fibria Celulose SA (FBR)	19. Mercer International Inc. (MERC)	29. Resolute Forest Products Inc. (RFP)	39. WestRock Co. (WRK)
10. Glatfelter Co. (GLT)	20. Neenah Paper Inc. (NP)	30. RR Donnelly & Sons Co. (RRD)	40. Weyerhaeuser Co. (WY)

PaperMoney original material is provided with the intent of stimulating ideas among highly trained, experienced and sophisticated financial managers within the pulp, paper and forest products industry worldwide. PaperMoney relies on published sources for any data used in this material and is not responsible for errors or omissions due to same. This material is expressly not provided for the purpose of investment decisions. Always consult your own advisors before making any investment decisions.